

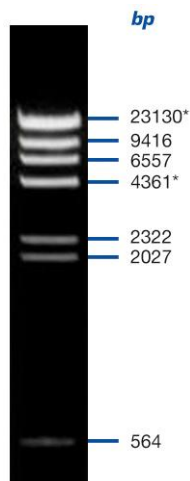
Data Sheet (11.08.2010)

mi- λ DNA (*Hind* III Digest)

ready-to-use

| Cat.-No. | Amount | Conc. |
|-----------|-------------|----------------------|
| mi-M8209S | 100 μ g | 0.2 μ g/ μ l |
| mi-M8209L | 500 μ g | 0.2 μ g/ μ l |

For in vitro use only!



Description

The *Hind* III digest of λ DNA yields the following 8 discrete fragments (in base pairs): 23130*, 9416, 6557, 4361*, 2322, 2027, 564, 125.

Preparation

Lambda DNA was completely digested by *Hind* III, phenol extracted, ethanol precipitated, dissolved in 10 mM Tris-HCl (pH 8.0) and 1 mM EDTA.

Note

Dilute in TE or other buffer of minimal ionic strength. DNA may denature if diluted in dH₂O and subsequently heated.

*The cohesive ends (12b cos site of bacteriophage) of fragments 23130 bp and 4361 bp may anneal to and form the additional band. These fragments may be separated by heating to 65 °C for 5 min and then cooling on ice for 3 min.

Form

60 mM Tris-HCl (pH 7.5), 60 mM EDTA, 60 % (w/v) Glycerol, Xylene Cyanol FF, Orange G

Storage

Store at -20 °C